

DP 3069 LT 3~ 413

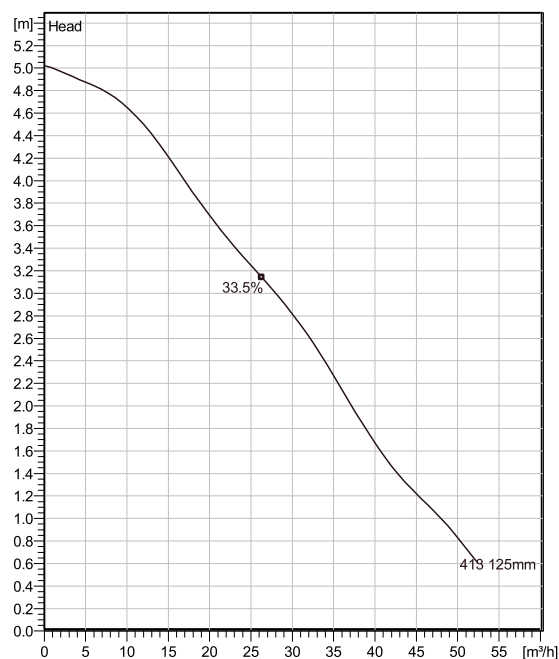
Portable pumps with vortex impellers ideal for applications in which the water or liquid contains concentrations of abrasives when clogging problems can occur.



Technical specification



Curves according to: Water, pure [100%], 4 °C, 999.9 kg/m³, 1.5692 mm²/s



Nominal (mean) data shown. Under- and over-performance from this data should be expected due to standard manufacturing tolerances.
Please consult your local Flygt representative for performance guarantees.

Configuration

Motor number D3069.180 13-08-4BB-W 1.5KW	Installation type P - Semi permanent, Wet
Impeller diameter 125 mm	Discharge diameter 65 mm

Pump information

Impeller diameter 125 mm
Discharge diameter 65 mm
Inlet diameter 65 mm
Maximum operating speed 1370 rpm
Number of blades 6
Max. fluid temperature 40 °C

Materials

Impeller Grey cast iron
Stator housing material Grey cast iron

Project Xylect-20757148
Block

Created by romuald VAN KAAM
Created on 6/22/2023 **Last update** 6/22/2023

DP 3069 LT 3~ 413

Technical specification



Motor - General

Motor number D3069.180 13-08-4BB-W 1.5KW	Phases 3~	Rated speed 1370 rpm	Rated power 1.5 kW
Approval No	Number of poles 4	Rated current 4.4 A	Stator variant 4
Frequency 50 Hz	Rated voltage 400 V	Insulation class F	Type of Duty S1
Version code 180			

Motor - Technical

Power factor - 1/1 Load 0.76	Motor efficiency - 1/1 Load 65.4 %	Total moment of inertia 0.009 kg m ²	Starts per hour max. 15
Power factor - 3/4 Load 0.66	Motor efficiency - 3/4 Load 65.2 %	Starting current, direct starting 16 A	
Power factor - 1/2 Load 0.52	Motor efficiency - 1/2 Load 60.4 %	Starting current, star-delta 5.34 A	

Project Xylect-20757148
Block

Created by romuald VAN KAAM
Created on 6/22/2023 **Last update** 6/22/2023

DP 3069 LT 3~ 413

Performance curve

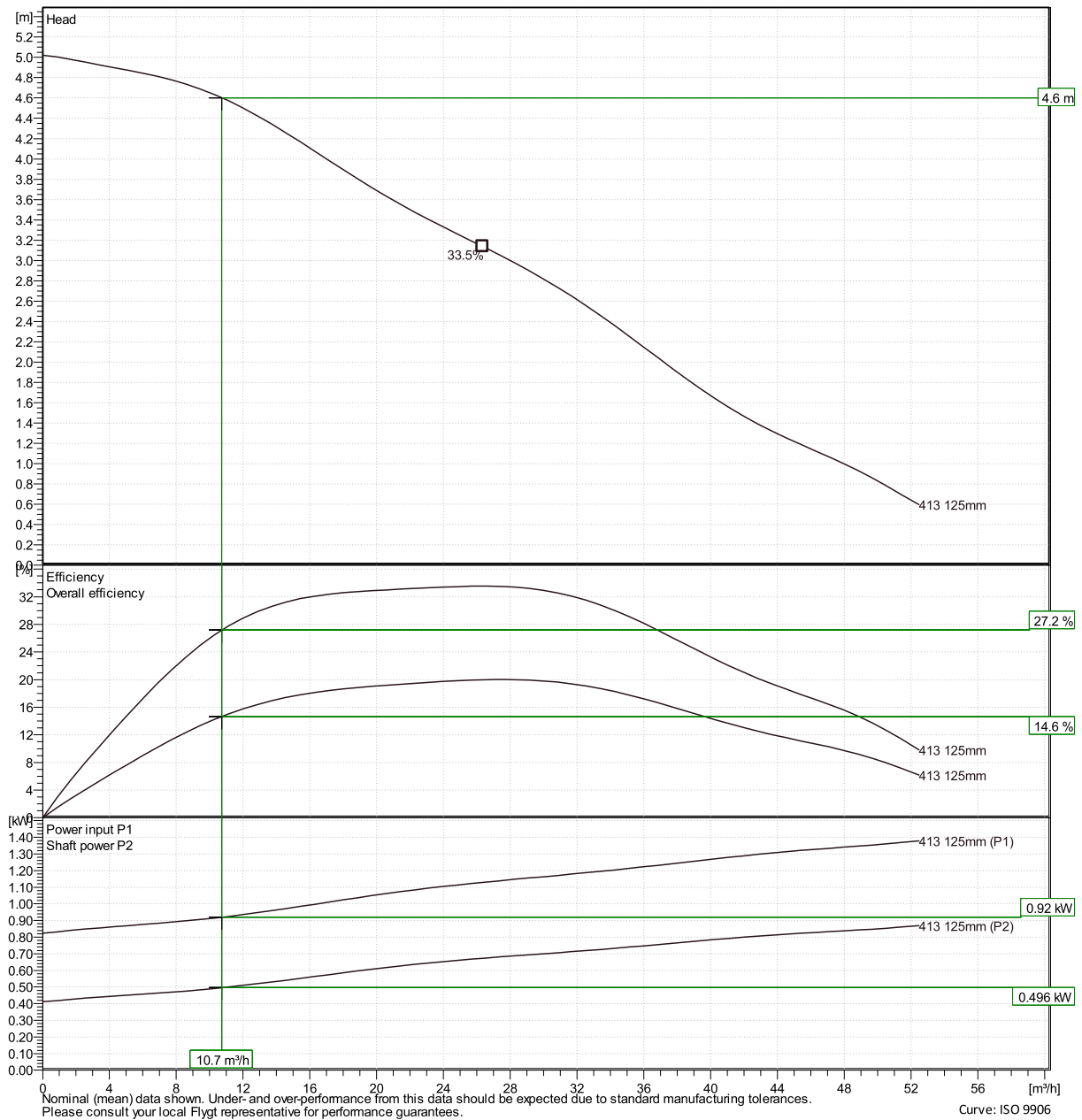


Duty point

Flow
10.7 m³/h

Head
4.6 m

Curves according to: Water, pure [100%], 4 °C, 999.9 kg/m³, 1.5692 mm²/s



Project Xylect-20757148

Created by romuald VAN KAAM

Block

Created on 6/22/2023 Last update

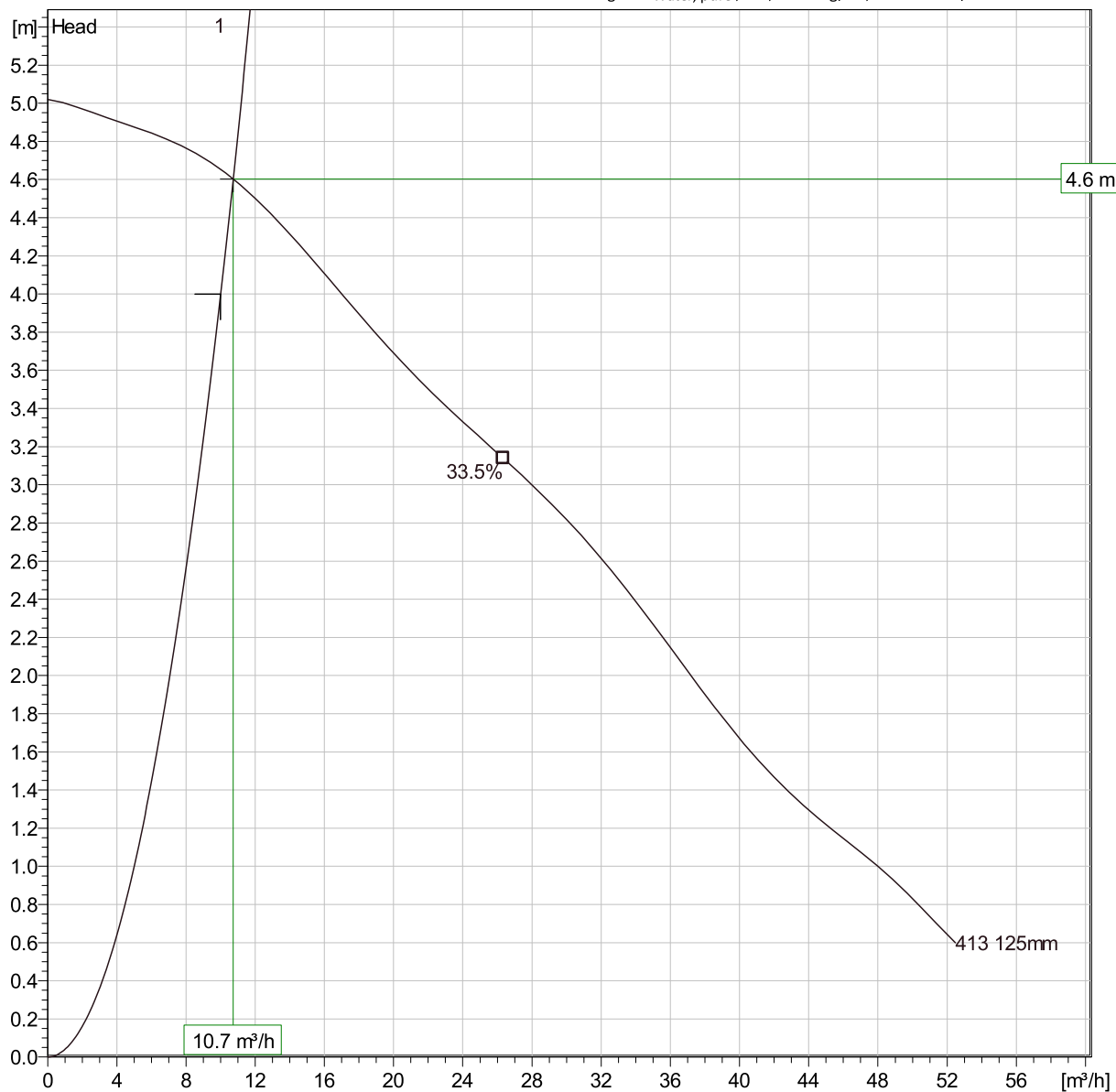
6/22/2023

DP 3069 LT 3~ 413

Duty Analysis



Curves according to: Water, pure, 4 °C, 999.9 kg/m³, 1.5692 mm²/s



Operating characteristics

Pumps / Systems	Flow	Head	Shaft power	Flow	Head	Shaft power	Hydr.eff.	Specific Energy	NPSHre
1	10.7 m³/h	4.6 m	0.496 kW	10.7 m³/h	4.6 m	0.496 kW	27.2 %	0.0858 kWh/m	

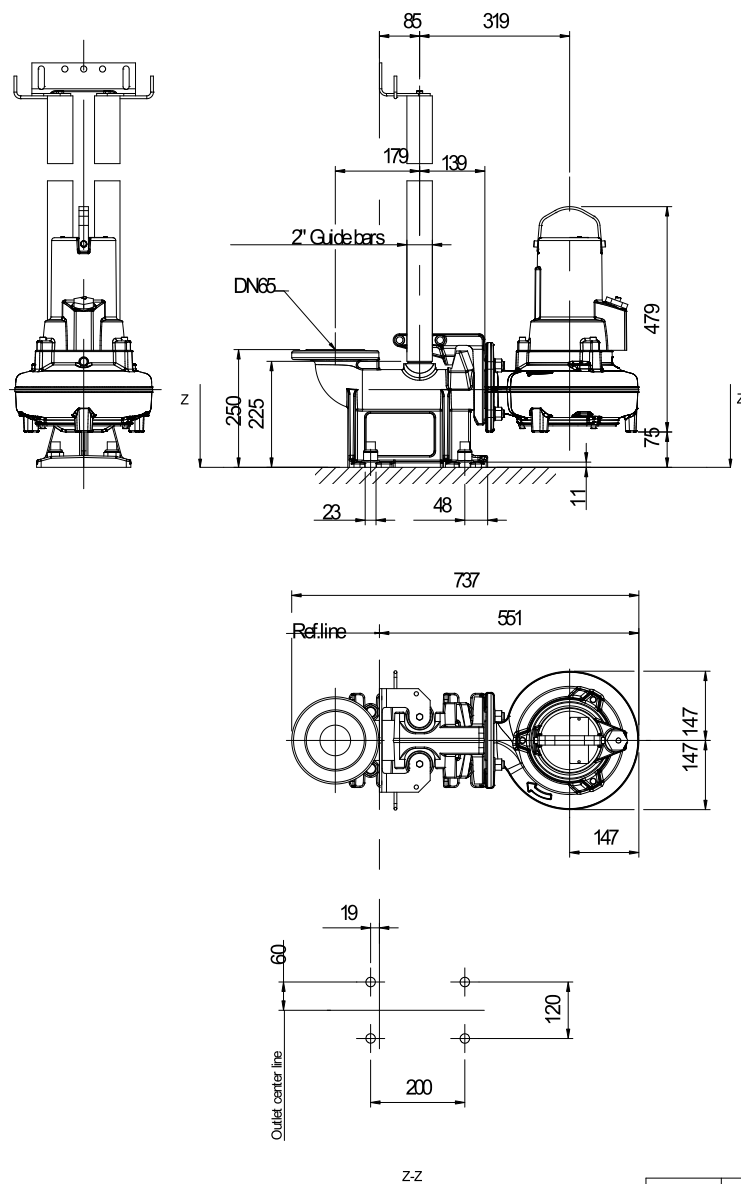
Project Xylect-20757148
Block

Created by romuald VAN KAAM
Created on 6/22/2023 Last update

6/22/2023

DP 3069 LT 3~ 413

Dimensional drawing



Weight	Pump	Stand
kg	47	22
Discharge outlet	DN 65	Scale
Pump outlet	DN 65	1:10
Pump inlet		Date
Suction inlet		190909
		Drawing number
		7996700
		Revision
		4

Project Xylect-20757148
Block

Created by romuald VAN KAAM
Created on 6/22/2023 Last update

6/22/2023